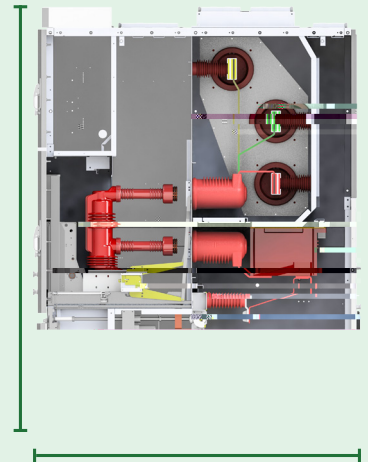
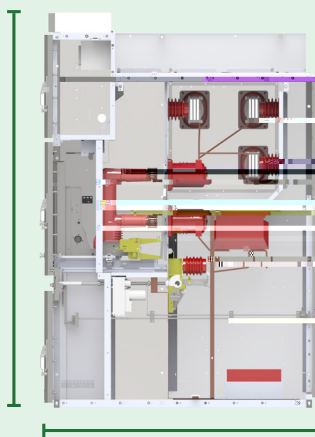
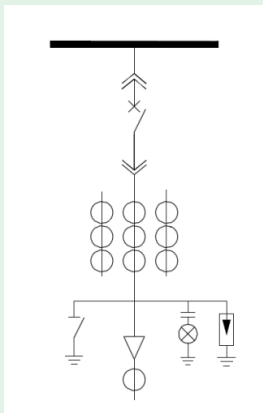




12/24kV

Removable Metal - enclosed Switchgear



Product description

The KYN 27 series of indoor switchgear is used to receive and distribute power, control and monitor the power system in the three-phase 50 Hz single-bus and single bus section system with the rated voltage of 3.6 to 24 kV. It is mainly used in power plants, substations, petroleum and chemical industries.

Electrical features

Temperature-rise tests: 1.1 times of rated current, 10K below IEC limits

Altitude: 12kV products adaptable to altitude of up to 5,000m, 24kV products adaptable to altitude of up to 2,000m

Durable: circuit breaker with electrical endurance of 30 operations, E2 class earthing switch (5 times)

Reliable: circuit breaker and earthing switch mechanically type tested for 10,000 and 3,000 operations respectively

Automation and remote control: for chassis truck and earthing switch

Technical specification

Parameter		Unit	Data	
Rated voltage		kV	12	24
Rated frequency		Hz	50	
Rated current of main busbar		A		
Branch busbar rated current		A	630 / 1,250 / 2,000 / 2,500 / 3,150 / 4,000 / 5,000	1,250 / 3,150
Rated insulation levels	Rated power frequency withstand voltage (1min)	kV	42 (fracture48)	65 (fracture79)
	Rated lightning impulse withstand voltage		75 (fracture85)	125 (fracture145)
Rated short-time withstand currents		kA	25 / 31.5 / 40 / 50	31.5
Rated duration of short circuit		s	4	
Rated peak withstand currents		kA	63 / 100 / 80 / 100 / 125	80
Rated short circuit breaking current		kA	25 / 31.5 / 40 / 50	31.5
Rated short circuit making current (peak)		kA	63 / 80 / 100 / 125	80
Internal Arc		kA/s	ALFR 25/1 31.5/1 40/1 50/1	ALFR 31.5/1
Degree of protection	enclosure/compartment	/	IP 4X/ IP 2X	

Optional intelligent modules

① Data processing and transmission module

② Built-in video monitoring module

③ Sensor for determine the location of the circuit breaker

④ Current sensor

⑤ Magnetic sensor to monitor depletion of circuit breaker

⑥ Temperature collection module

⑦ Partial discharge online monitoring module

⑧ Electric chassis truck to control circuit breaker

magnetic sensor to monitor depletion of circuit breaker

1,250A/4,000A built-in temperature measurement sensor on circuit breaker contact

partial discharge online monitoring sensor applicable to ultra-sound, ultra-high frequency and transient ground voltage